

Physical Appearance



Physical Appearance

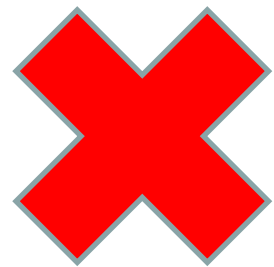
- Age 年齡
- Height 高度
- Hair 髮型
- Build/ Figure 體型



問及有關外貌的問題

可以這樣說

- What **does** he/she look like?
- What **is** he/she like?



What does he/she like?



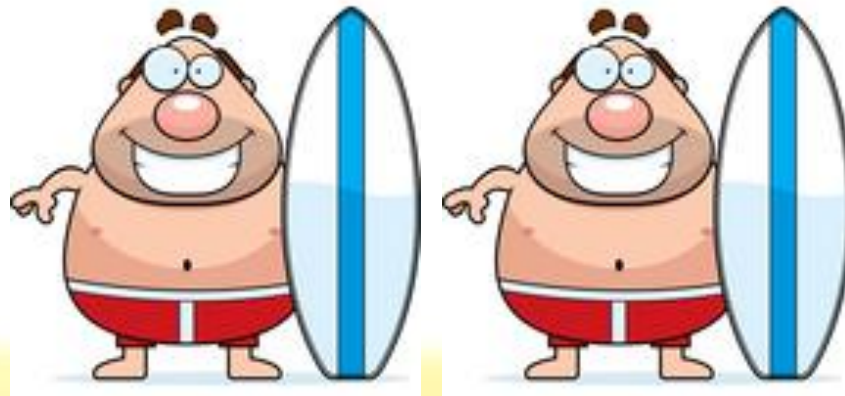
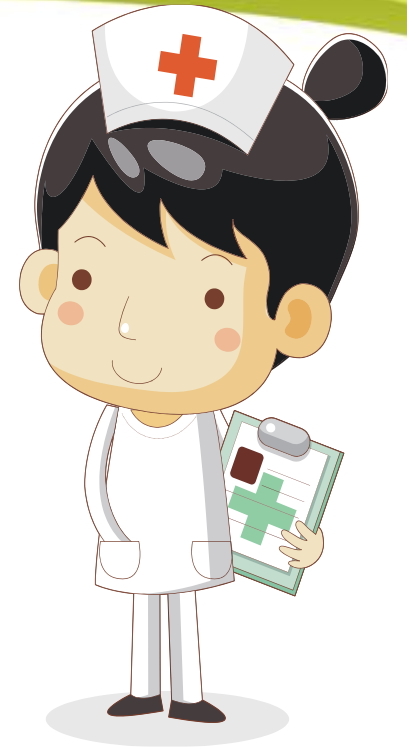
Build / Figure: 身型肥胖

■ fat [adj] = 肥胖

■ overweight [adj] = 過重

■ obese [adj] = 過胖

■ a heavyweight [n] = 一個超過平均體重的人



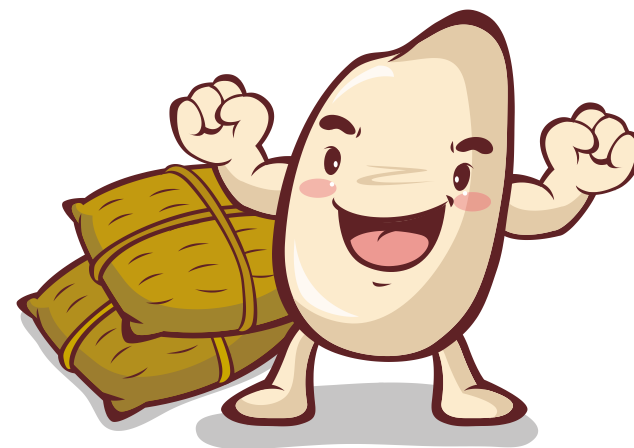
Build / Figure: 身型肥胖

- chubby [adj] = 胖胖的
- plump [adj] = 肥嘟嘟
- pot-belly [n] = 大肚腩 / 有大肚腩的人
- a pot-bellied [adj] guy = 有大肚腩的男人



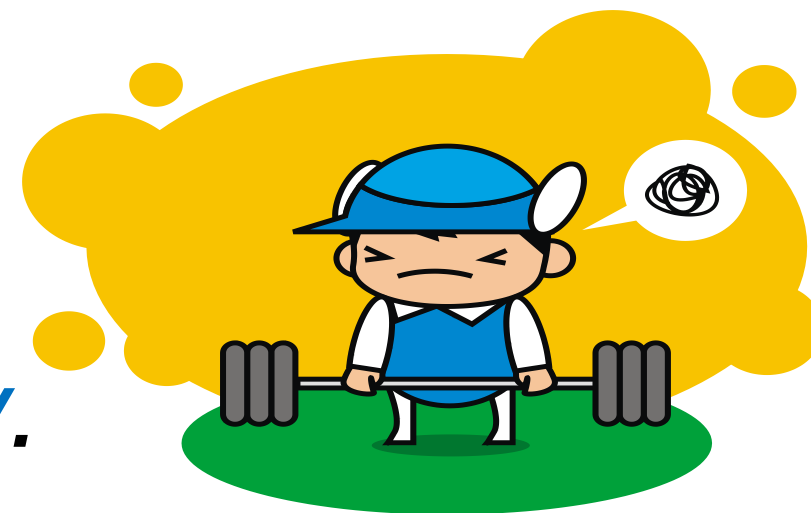
Build / Figure: 又矮又胖

- thickset [adj] (身型結實)
- pudgy [adj]
- roly-poly [n]



● a *thickset* / *pudgy* child
一個矮小肥胖的小孩

● The child is a real *roly-poly*.
這小孩真是又矮又胖



Build / Figure: 個子小/瘦削

- petite / dinky [adj] = 嬌小玲瓏
- thin / slim / skinny / scrawny [adj] = 瘦削
- slim [adj] = 形容一些雖瘦但看起來健康的人
- skinny / scrawny [adj] = 皮包骨

● *He is like a walking skeleton.*
他瘦得像皮包骨一樣



Build / Figure: 個子小/瘦削

- petite / dinky [adj] = 嬌小玲瓏
- thin / slim / skinny / scrawny [adj] = 瘦削
- slim [adj] = 形容一些雖瘦但看起來健康的人
- skinny / scrawny [adj] = 皮包骨

● *He is like a walking skeleton.*
他瘦得像皮包骨一樣



Build / Figure: 個子小/瘦削

- petite / dinky [adj] = 嬌小玲瓏
- thin / slim / skinny / scrawny [adj] = 瘦削
- slim [adj] = 形容一些雖瘦但看起來健康的人
- skinny / scrawny [adj] = 皮包骨

● *He is like a walking skeleton.*
他瘦得像皮包骨一樣



Build / Figure: 個子小/瘦削

- petite / dinky [adj] = 嬌小玲瓏
- thin / slim / skinny / scrawny [adj] = 瘦削
- slim [adj] = 形容一些雖瘦但看起來健康的人
- skinny / scrawny [adj] = 皮包骨

● *He is like a walking skeleton.*
他瘦得像皮包骨一樣

